

R15IB7T-PPC3

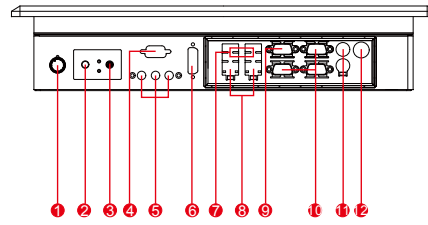
15" P-CAP Panel PC (Intel® Celeron® Bay Trial-M N2930, 1.83GHz)

Mechanical Design



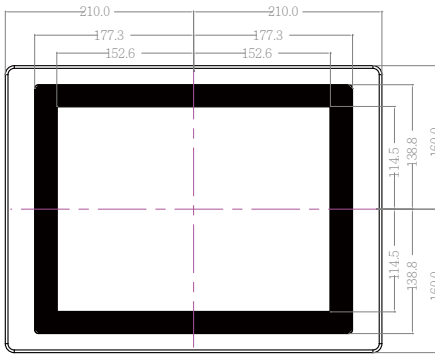
**Real Flat Panel Mount
(IP65 front side)**

Fully Integrated I/O

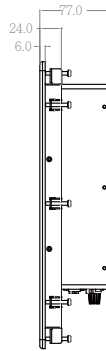


1. Brightness Adjustment Knob
2. Power On Button
3. Power Reset Button
4. RS-232 Conn. (Optional)
5. Audio Jack
6. DVI (Optional)
7. USB
8. LAN
9. VGA Out
10. RS-232 Conn.
11. PS/2
12. DC-IN Power Jack

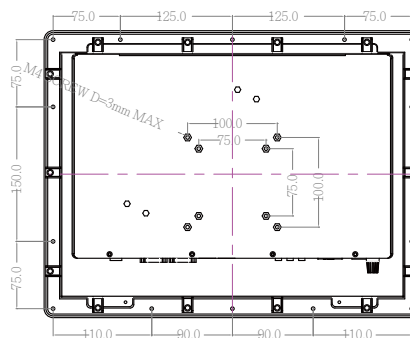
FRONT VIEW



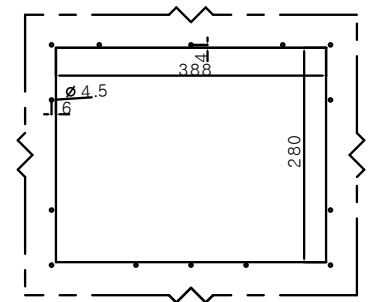
Dimensions



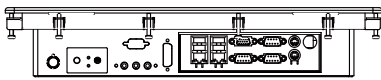
BACK VIEW



CUT OUT



1:2



BOTTOM VIEW

- * Measurements shown in mm
- * Tolerance of all dimensions is shown as follow 0~30 mm ± 0.1mm, 30~50 mm ± 0.15 mm, 50~120 mm ± 0.2 mm, above 120 mm ± 0.25 mm
- * Note: this is a simplified drawing and some components are not marked in detail. Please contact our sales representative if you need further product information.

Specifications

System:

- Processor : Intel® Celeron® Bay Trial-M N2930, 1.83GHz
- System Chipset : Intel® Atom SoC Integrated
- System Memory : SODIMM DDR3L 1600/1333, max. 8GB
- Storage : mSATA SSD 64GB (Default)
- LAN : Intel I210-AT GbE LAN x 2
- Audio Codec : Realtek ALC886 HD Audio Codec

Input / Output :

- Serial Ports : 2 x RS232, 1 x RS232/422/485
- USB Ports : 1 x USB 3.0, 3 x USB 2.0
- Keyboard/Mouse : 2 x PS/2
- Ethernet : 2 x RJ45-10/100/1000 Mbps
- VGA : 1 x VGA (female)
- Audio : Line-out, Line-in, Mic in
- Power : 1 x DC-in Power Jack(+12V)

• Default: RS232

Expansion Slot :

- Mini PCIe : 2 x Mini PCIe (1 for WiFi, 1 for 3G Module)
- eDP : 1 x eDP by 2x10 DF-13 connector

Power Specifications :

- Power input : 12V DC
- Power Consumption : 38W (typ.)(Max.backlight & high CPU load)

Accessories :

- External Adapter : 110~240V AC Power Adapter

Display :

- Size/Type : 15" TFT
- Resolutions : 1024x768
- Brightness : 250 cd/m (typ.)
- Contrast Ratio : 700 : 1 (typ.)
- Viewing Angle : -70~70(H); -60~60(V)
- Max. Colors : 16.2M
- Touch Screen : Projected capacitive multi-touch

Environment Considerations :

- Operating Temperature : 0°C to 50°C
- Operating Humidity : 30% to 90% (non-condensing)
- IP Rating : Front IP65

OS BSP / Driver Support :

- OS : Windows 10 IoT Enterprise
Windows 7 Embedded
Windows 8 Embedded (Optional)