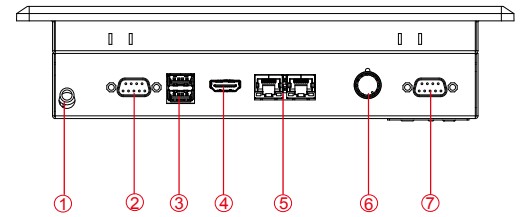
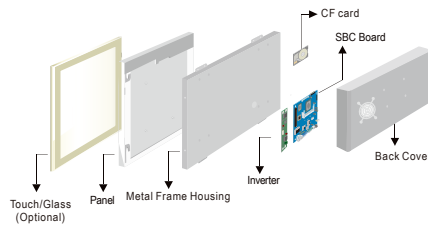


R08IB3S-IPT1WT 8.4" Panel PC (Intel® Celeron® Bay Trail-M N2930, 1.83 GHz)

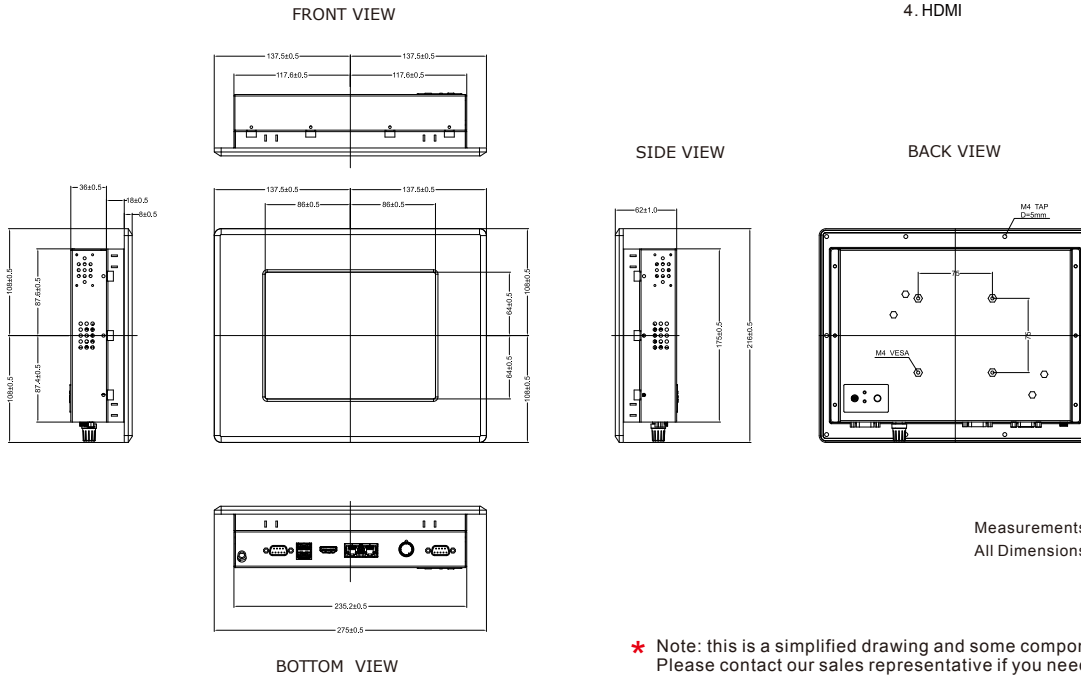
Mechanical Design



1. DC-IN Power Jack
2. RS232/422/485
3. USB
4. HDMI
5. RJ-45
6. Dimming Knob
7. RS-232

Ip65 (8mm front bezel)

Modularized Construction



Measurements shown in mm
All Dimensions are ± 0.5 mm

* Note: this is a simplified drawing and some components are not marked in detail. Please contact our sales representative if you need further product information.

Specifications

System:

- CPU : Intel® Celeron® Bay Trail-M N2930, 1.83 GHz
- Memory Slot : SODIMM DDR3L 1600/1333, max. 8GB
- System Chipset : Intel Atom SoC Integrated
- IDE/SATA : 1 x SATA II
- LAN : Intel I210-AT GbE LAN x 2
- Audio Codec : Realtek ALC886 HD Audio Codec
- Storage : mSATA SSD 64GB (Default)

Accessories :

- External Adapter : 110~240V AC Power Adapter

Panel Spec :

- Size/Type : 8.4" TFT
- Resolutions : 800x600
- Brightness : 450cd/m (typ.)
- Contrast Ratio : 600 : 1 (typ.)
- Viewing Angle : -80~80(H); -60~80(V)
- Max. Colors : 16.2M (8bits/Color)

Environment Considerations :

- Operating Temperature : -20°C to 60°C
- Operating Humidity : 30% to 90% (non-condensing)

Order Options :

- | | |
|--------------------------------------|--|
| Touch : 4 Wires Resistive (Optional) | RAM : SODIMM DDR3L
1600/1333, max. 8GB |
| | OS : Windows 10 IoT Enterprise
Windows 7 Embedded
Windows 8 Embedded |

Input / Output :

- Serial Ports : 2 x RS232, 1 x RS232/422/485
- USB Ports : 1 x USB 3.0, 1 x USB 2.0
- Ethernet : 2 x RJ45-10/100/1000 Mbps
- HDMI : 1 x HDMI
- Power : 1 x DC-in Power Jack(+12V)

• Default: RS232

Expansion Slot :

- Mini PCIe : 2 x Mini PCIe (1 for WiFi, 1 for 3G Module)

Power Specifications :

- Power input : 12V DC
- Power Consumption : 35W (typ.)(Max.backlight & high CPU load)