

EAC mini (EACIL20) is an industrial IoT gateway with low power consuming Intel® Apollo Lake processor and excellent expansion possibilities. Expansion module offers rich options from additional serial interfaces, CANBus, DIDO to Wi-Fi and 4G LTE. Wireless connectivity and all necessary connectors allow the EAC mini (EACIL20) to send data from manufacturing facilities directly to cloud server. Compact size and rich expansions make EAC mini to be suitable for IoT, smart factory and machine automation applications.

## Product Features

- Intel® Apollo Lake N3350 1.1 GHz  
Intel® Apollo Lake N4200 1.1 GHz (Option)
- Fanless cooling system
- Compact size 100 x 70 x 31 mm (w/o mounting bracket)
- Expansion module design
- Various mounting options: desk, wall, VESA, DIN-Rail
- Suitable for smart factory applications



## Optional Configuration

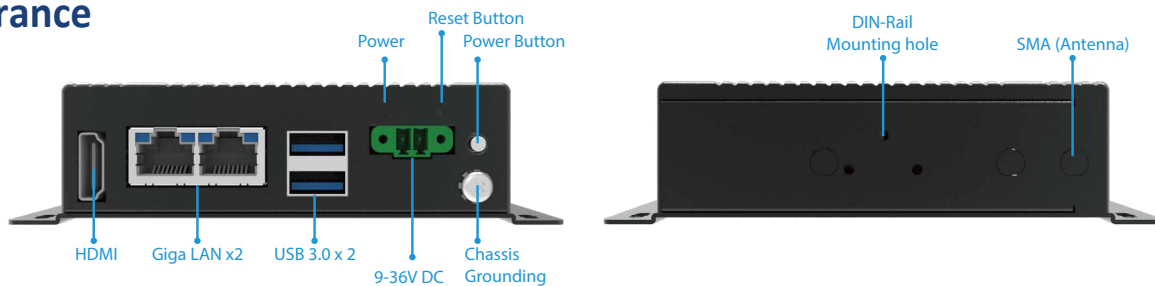
- **Optional Storage**  
32GB mSATA  
64GB mSATA
- **Optional Mounting**  
VESA Mounting  
DIN-Rail Mounting

## Optional Expansion Module

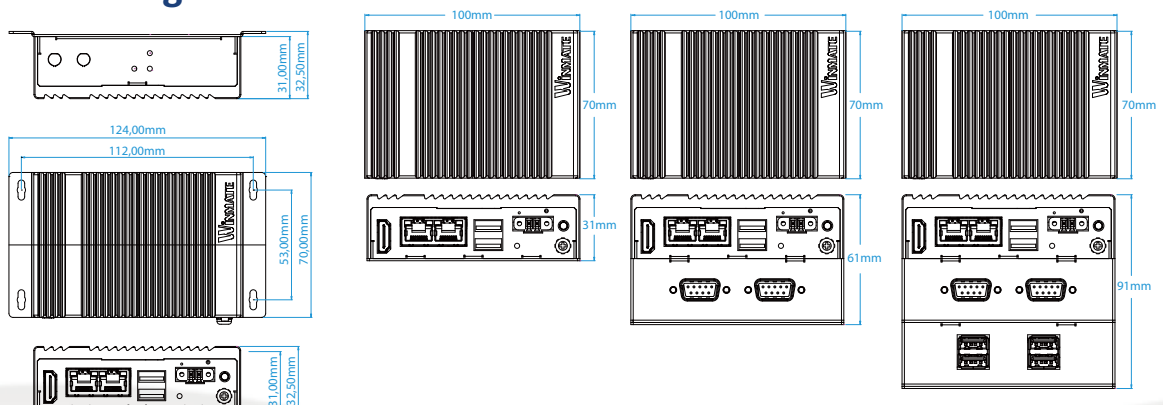
- EACWSLT-222 4G
- EACWSLT-223 3G
- EACWSLT-231 3-port RS232/422/485 w/ isolation
- EACWSLT-232 16-Channel Digital I/O w/ isolation
- EACWSLT-233 2-port CANBUS w/ isolation
- EACWLST-234 4-port USB 2.0
- EACWLST-235 2-port RS232/422/485 w/ isolation
- EACWLST-236 2-port Giga-LAN
- EACWLST-237 4G ( Dual SIM Card Slot)



## Appearance



## Mechanical Drawing



## Product Specifications

<b>System Specification</b>		<b>Certificate</b>	
<b>CPU</b>	Intel® Apollo Lake N3350 1.1 GHz Intel® Apollo Lake N4200 1.1 GHz (Option)	<b>EMC &amp; Safety</b>	CE, FCC
<b>Graphics Engine</b>	Intel® HD Graphics	<b>Operating System (Optional)</b>	
<b>BIOS</b>	Insyde UEFI	<b>OS</b>	Windows® 10 IoT Enterprise Linux 4.1.5 Ubuntu 16.04
<b>Watchdog Timer</b>	Programmable 256 levels, timer interval 1 to 255 sec.	<b>Ordering information</b>	
<b>Technology</b>	4GB LPDDR3 1866MHz	<b>EACIL20-100-A432</b>	Intel N3350, 4G RAM, 32GB eMMC, 2 x USB 3.0, 2 x GbE LAN, 1 x HDMI
<b>Storage</b>		<b>EACIL20-101-A432</b>	Intel N3350, 4G RAM, 32GB eMMC, 2 x USB 3.0, 2 x GbE LAN, 1 x HDMI, Wi-Fi
<b>eMMC</b>	Onboard 32 GB (default), up to 128GB	<b>EACIL20-102-A432</b>	Intel N3350, 4G RAM, 32GB eMMC, 2 x USB 3.0, 2 x GbE LAN, 1 x HDMI, 4G
<b>mSATA</b>	up to 1TB (Option)	<b>EACIL20-119-A432</b>	Intel N3350, 4G RAM, 32GB eMMC, 2 x USB 3.0, 2 x GbE LAN, 1 x HDMI, mSATA expansion
<b>Expansion</b>		<b>Expansion Module (Optional)</b>	
<b>mPCIe</b>	1 x Full-size mPCIe slot	<b>EACWSLT-222</b>	4G
<b>USB Wafer</b>	2 x USB Wafer	<b>EACWSLT-223</b>	3G
<b>External I/O</b>		<b>EACWSLT-231</b>	3-port RS232/422/485 w/ isolation
<b>USB</b>	2 x USB3.0	<b>EACWSLT-232</b>	16-Channel Digital I/O w/ isolation
<b>Ethernet</b>	2 x Giga LAN RJ45 Connector	<b>EACWSLT-233</b>	2-port CANBUS w/ isolation
<b>HDMI</b>	1 x HDMI, supports 1920 x 1080@60 Hz	<b>EACWLST-234</b>	4-port USB 2.0
<b>Buttons and LED Indicators</b>		<b>EACWLST-235</b>	2-port RS232/422/485 w/ isolation
<b>LED Indicator</b>	1 x Power	<b>EACWLST-236</b>	2-port Giga-LAN
<b>Button</b>	1 x Power Button 1 x Reset Button	<b>EACWLST-237</b>	4G ( Dual SIM Card Slot)
<b>Power Management</b>		<b>Accessories</b>	
<b>Power Supply</b>	9V to 36V DC, 2-Pin Terminal Block	<b>Standard</b>	<ul style="list-style-type: none"> <li>Quick Start Guide (P/N #915211101025)</li> <li>Driver CD(P/N #917111101000)</li> <li>Terminal Block 2 pin to 2.5Ø Female Adapter Cable (P/N #94J602G020K2)</li> </ul>
<b>Grounding Protection</b>	Chassis Grounding	<b>Optional</b>	<ul style="list-style-type: none"> <li>WLAN External Antenna (P/N #397SM0000002)</li> <li>WWAN External Antenna (P/N #39700000000H)</li> <li>AC Adapter 12V/36W (P/N #922D036W12V6)</li> <li>VESA Mounting Kit (P/N #98K000A0009A)</li> <li>DIN Rail Mounting Kit (P/N #98K000A00099)</li> </ul>
<b>Mechanical Specification</b>			
<b>Dimensions</b>	100 (W) x 70 (H) x 31(D) mm(One layer) 100 (W) x 70 (H) x 61(D) mm(Double layer)		
<b>Weight</b>	0.6 kg (One layer), 0.7 kg (double layer)		
<b>Mounting</b>	Desk Mounting (Default), Wall Mounting (Default), VESA Mounting (Optional), DIN-Rail Mounting (Optional),		
<b>Cooling System</b>	Fanless		
<b>Enclosure</b>	Metal Housing		
<b>Environment</b>			
<b>Operating Temp.</b>	-15~55° C		
<b>Storage Temp.</b>	-15~70° C		
<b>Operating Humidity</b>	10~90% RH		
<b>Shock</b>	Operating, IEC 60068-2-27		
<b>Vibration</b>	Operating, IEC 60068-2-64		
<b>IP Rating</b>	IP30		